



ISO 9001:2015



EST .2013

Strives For Superior Quality, Facilitate the Industry Future.



JEEMAR POWER CO.,LTD

No.11, Youxin Road, Qianzhou Industrial Zone,
Huishan District, Wuxi City, Jiangsu Province, China

www.jeemar.com
info@jeemar.com

2022 CATALOGUE





JEEMAR, as an internationalized company who integrated R&D, manufacturing, marketing on engines and power products, is committed to providing the customers with innovative and high-efficient power solutions.

With 10years of development, JEEMAR products have been well recognized in more than 150 countries and regions. The booming development of JEEMAR in the global market is attributed to its development strategy that sustainable development must be closely tied to the "low carbon" economic target. In the whole process from R&D to manufacturing, the concept of energy-saving and environmental protection is always in the deep mind of JEEMAR family.

As the excellent manufacturer of complete power system, JEEMAR has its unique advantage in manufacturing of engine, water pump, generator set, and automatic transfer switch. All components are from the only one manufacturer and designed for cooperative and smooth operation, so high-efficient, cost-effective and seamless solutions can be provided for JEEMAR customers.

Thanks to the high quality, good durability products and reliable technology, reliability of the JEEMAR integrated power solutions are greatly enhanced. The optimized engine performance and high-precision post-treatment guarantee a cost-benefit solution. Our complete systematic solutions would bring you the best efficiency, reliability and maintenance services.

Excellent performance, high efficiency, low emission, JEEMAR always believes innovation leads the future power!

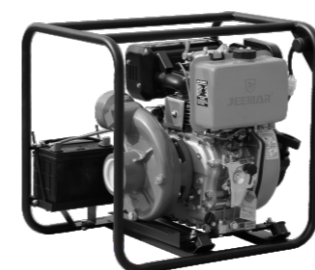


Contents



01

ENGINE
P01~P04



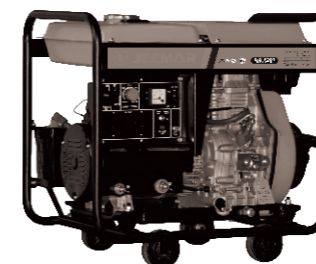
02

PUMP
P05~P08



03

GENERATOR
P09~P14



04

WELDER
P15~P16

- 170F(E)
- 178F(E)
- 186FA(E)
- 188FA(E)
- 192FA(E)



JM170F (E)



JM178F (E)



JM186FA (E)



JM192FA (E)

DIESEL ENGINE
10+YEAR OEM&ODM
PROFESSIONAL EXPERIENCE

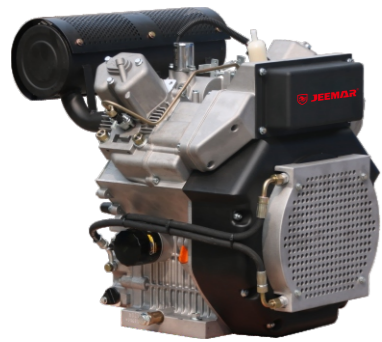


- 2V88
- 2V92
- 2V95

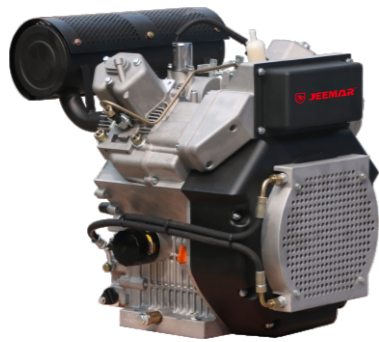
MODEL NO	JM170F (E)	JM178F (E)	JM186FA (E)	JM188FA (E)	JM192FA (E)
Engine Type	Single-cylinder,vertical,air-cooled,fourstroke,direct injection				
Bore × Stroke [mm]	70×55	78×62	86×72	88×75	92×75
Displacement [cc]	211	296	418	456	499
Compression ratio	20:1		19.5:1		
Rated power[kw]	2.5/ 2.8	3.7 /4.0	5.7/ 6.3	6.6 /6.9	7.6/8.6
Rated speed[r/min]	3000/3600				
Lubricating system	Pressure splashed				
Lubricating system	Electric Start				
Rotation direction	Anticlockwise(face to the output axle)				
Fuel type	0#(summer),-10#(winter),-20#(chilliness) diesel				
Fuel tank capacity [L]	2.5	3.5	5.5	5.5	5.5
Fuel consumption[g/kW.h]	280.2/288.3	276.1/285.6	275.1/ 281.5	275/280	275/280
Rotation speed[r/min]	3000/3600	3000/3600	3000/3600	3000/3600	3000/3600
Lube oil type	CD Grade Above or SAE 10W-30,SAE15W-40				
Lube oil capacity [L]	0.75	1.1	1.65	1.65	1.65
Starting motor capacity	12v 0.8kw				12v 1.2kw
Charging generator capacity	12V 3A				
Battery capacity	12V 24Ah-36Ah				
Packing Size(L×W×H)[mm]	420*380*460	460*455*510	495*460*550		
Gross weight [kg]	F: 27 E: 31	F: 33 E: 38	F: 48 E: 53	F: 48 E: 53	F: 50 E: 55

DIESEL ENGINE
10+YEAR OEM&ODM
PROFESSIONAL EXPERIENCE





JM2V88F



JM2V92F



JM2V95F

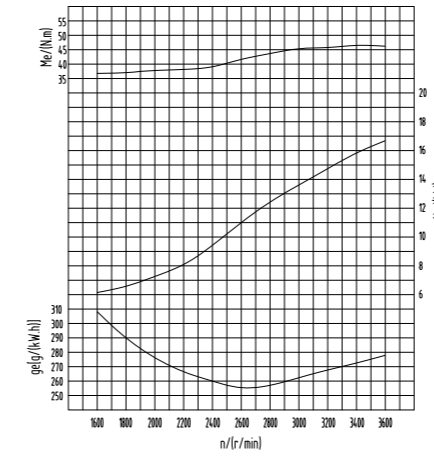
MODEL NO	JM2V88F	JM2V92F	JM2V95F
Engine Type	V-Two,4-Stroke,Air Cooled,Direct Injection		
Bore × Stroke [mm]	88x75	92x75	95x88
Displacement [cc]	912	997	1247
Compression ratio	20:1		
Rated power[kw]	13.8/14.8	14.8/16	18/ 19
Rated speed[r/min]	3000/3600	3000/3600	3000/3600
Lubricating system	Pressure splashed		
Starting system	Electric Start		
Rotation direction	Anticlockwise(face to the output axle)		
Fuel type	0#(summer),-10#(winter),-20#(chilliness) diesel		
Fuel tank capacity [L]	14	14	14
Fuel consumption[g/kW.h]	250/260	250/260	250/260
Rotation speed[r/min]	3000/3600	3000/3600	3000/3600
Lube oil type	CD Grade Above or SAE 10W-30,SAE15W-40		
Lube oil capacity [L]	2.8	3.5	3.5
Starting motor capacity	12V 1.8kW	12V 1.8kW	12V 1.8kW
Charging generator capacity	12V 3A	12V 3A	12V 3A
Battery capacity	12V 36Ah-45Ah		
Packing Size(L×W×H)[mm]	640*640*725(W/O Fuel Tank)	640*640*725(W/O Fuel Tank)	640*640*725(W/O Fuel Tank)
Gross weight [kg]	78	84	88

DIESEL ENGINE
10+YEAR OEM&ODM
 PROFESSIONAL EXPERIENCE

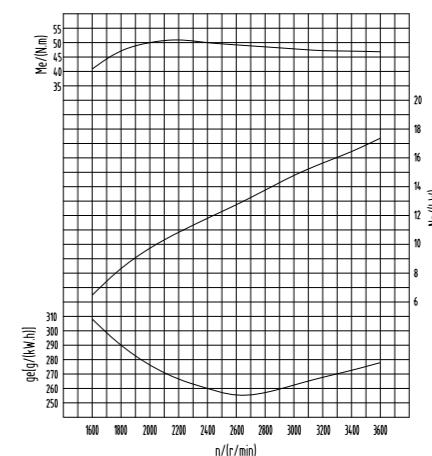


P03

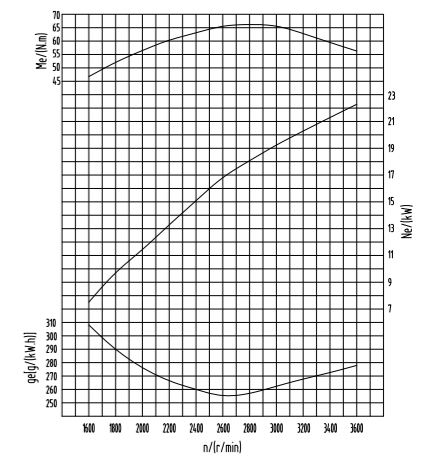
PERFORMANCE CURVE



JM2V88F

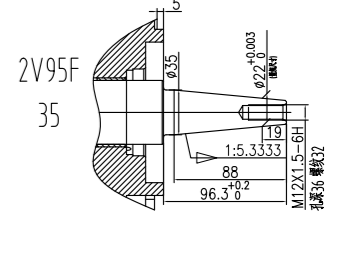
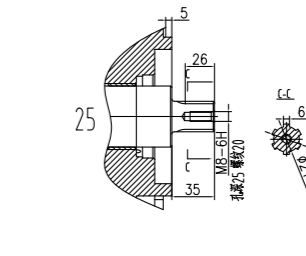
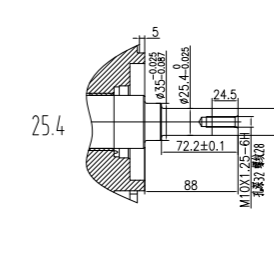
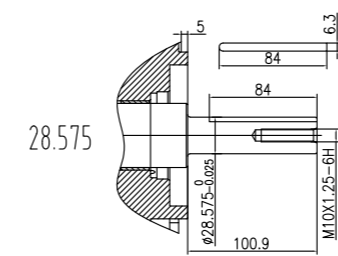
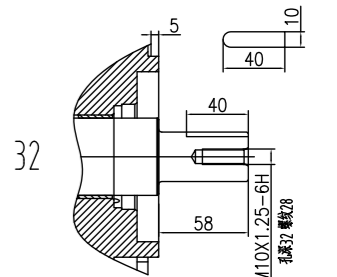
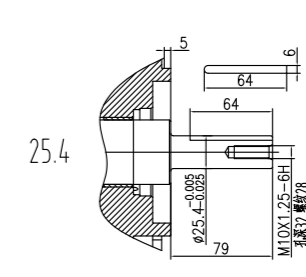
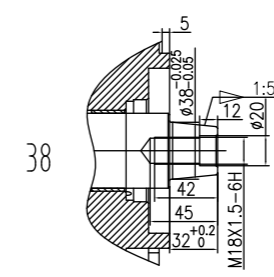
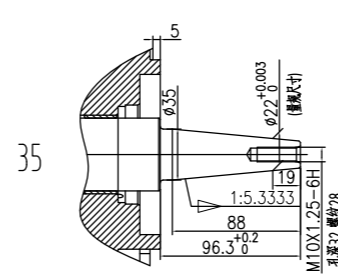


JM2V92F



JM2V95F

PTO TYPES



DIESEL ENGINE
10+YEAR OEM&ODM
 PROFESSIONAL EXPERIENCE



P04



MODEL NO	JM20DP	JM30DP	JM40DP
Inlet/Outlet Dia[in/mm]	2/50	3/80	4/100
Lift H.max [m]	15	17	19
Flow Q.max [m3/h]	22	35	40
Suction H.max[m]	8	8	8
Engine Model	JM170F(E)	JM178F(E)	JM186FA(E)
Engine Type	1-Cylinder, 4 Stroke , Direct Injection,Air-cooled Diesel Engine		
Broke x Stroke	70x55	78x62	86x72
Displacement	211	296	418
Compression Ratio	20:1	20:1	19.5:1
Rated Rotation Speed	3600	3600	3600
Rated power	2.8	4	6.3
Starting System	Recoil starter OR Electric start		
Lube oil type	CD Grade Above or SAE 10W-30,SAE15W-40		
Lube oil capacity [L]	0.75	1.1	1.65
Fuel Type	0#(summer),-10#(winter),-20#(chilliness) diesel		
Fuel Tank Capacity	2.5	3.5	5.5
Packing Size(L×W×H)[mm]	505*420*545	570*490*570	660*475*630
Gross weight [kg]	37	45	63



MODEL NO	JM15HDP	JM20HDP	JM30HDP
Inlet/Outlet Dia[in/mm]	1.5/40	2/50	3/80
Lift H.max [m]	42	45	66
Flow Q.max [m3/h]	12	18	39
Suction H.max[m]	6	6	6
Engine Model	JM178F(E)	JM186FA(E)	JM186FA(E)
Engine Type	1-Cylinder, 4 Stroke , Direct Injection,Air-cooled Diesel Engine		
Broke x Stroke	78x62	86x72	86x72
Displacement	296	418	418
Compression Ratio	20:1	19.5:1	19.5:1
Rated Rotation Speed	3600	3600	3600
Rated power	4.0	6.3	6.3
Starting System	Recoil starter OR Electric start		
Lube oil type	CD Grade Above or SAE 10W-30,SAE15W-40		
Lube oil capacity [L]	1.1	1.65	1.65
Fuel Type	0#(summer),-10#(winter),-20#(chilliness) diesel		
Fuel Tank Capacity	3.5	5.5	5.5
Packing Size(L×W×H)[mm]	570*465*670	655*480*720	660*475*630
Gross weight [kg]	47	67	62

DIESEL PUMP
10+YEAR OEM&ODM
PROFESSIONAL EXPERIENCE



P05

DIESEL PUMP
10+YEAR OEM&ODM
PROFESSIONAL EXPERIENCE



P06



MODEL NO	JM15ICP (171)	JM20ICP (175)	JM20ICP(198)
Inlet/Outlet Dia[in/mm]	1.5/40	2/50	2/50
Lift H.max [m]	65	70	90
Flow Q.max [m3/h]	23	27	32
Suction H.max[m]	6	6	6
Engine Model	JM178F(E)	JM178F(E)	186FA(E)
Engine Type	1-Cylinder, 4 Stroke , Direct Injection,Air-cooled Diesel Engine		
Broke x Stroke	78x62	78x62	86x72
Displacement	296	296	418
Compression Ratio	20:1	20:1	19.5:1
Rated Rotation Speed	3600	3600	3600
Rated power	4.0	4.0	6.3
Starting System	Recoil Start OR Electric Start		
Lube oil type	CD Grade Above or SAE 10W-30,SAE15W-40		
Lube oil capacity [L]	1.1	1.1	1.65
Fuel Type	0#(summer),-10#(winter),-20#(chilliness) diesel		
Fuel Tank Capacity	3.5	3.5	5.5
Packing Size(L×W×H)[mm]	520*470*570	520*470*570	580*480*630
Gross weight [kg]	50	50	65



MODEL NO	JM30ICP (188)	JM30ICP (208)	JM40ICP(150)
Inlet/Outlet Dia[in/mm]	3/80	3/80	4/100
Lift H.max [m]	75	90	40
Flow Q.max [m3/h]	40	44	93
Suction H.max[m]	6	6	6
Engine Model	JM186FA(E)	JM192FA(E)	JM192FA(E)
Engine Type	1-Cylinder, 4 Stroke , Direct Injection,Air-cooled Diesel Engine		
Broke x Stroke	86x72	92x75	92x75
Displacement	418	499	499
Compression Ratio	19.5:1	19.5:1	19.5:1
Rated Rotation Speed	3600	3600	3600
Rated power	6.3	8.6	8.6
Starting System	Recoil Start OR Electric Start		
Lube oil type	CD Grade Above or SAE 10W-30,SAE15W-40		
Lube oil capacity [L]	1.65	1.65	1.65
Fuel Type	0#(summer),-10#(winter),-20#(chilliness) diesel		
Fuel Tank Capacity	5.5	5.5	5.5
Packing Size(L×W×H)[mm]	580*480*630	570*480*620	570*480*620
Gross weight [kg]	74	78	80

DIESEL PUMP
10+YEAR OEM&ODM
PROFESSIONAL EXPERIENCE



DIESEL PUMP
10+YEAR OEM&ODM
PROFESSIONAL EXPERIENCE





MODEL NO	JM3000X(E)	JM4000X(E)	JM5000X(E)	JM6000X(E)
Rated frequency[Hz]	50/60	50/60	50/60	50/60
Rated voltage [V]	115/230 ;120/240	115/230 ;120/240	115/230 ;120/240	115/230 ;120/240
Rated power [kVA]	1.7/2.0	2.8/3.3	4.5/5.0	5.0/5.5
Max power[kVA]	2.0/2.2	3.2/3.8	5.0/5.5	5.5/6.0
Rated current [A]	14.8/7.4 ; 16.7/8.3	24.3/12.2 ; 27.5/13.8	39.1/19.6 ; 41.7/20.8	43.5/21.7 ; 45.8/22.9
Rated rotation speed [RPM]	3000/3600	3000/3600	3000/3600	3000/3600
Pole No.	2	2	2	2
Phase number	1	1	1	1
Excitation mode	Self-excitation and constant voltage(with AVR)			
Power factor [COSΦ]	1	1	1	1
Insulation grade	F	F	F	F
Engine model No	JM170F(E)	JM178F(E)	JM186FA(E)	JM188FA(E)
Engine type	Single cylinder, in-lined, 4-stroke, air cooled, direct-injected			
Bore×stroke	70x55	78x62	86x72	88x75
Displacement	211	296	418	456
Lubrication system	Pressure splashed			
Lube oil brand	CD Grade Above or SAE 10W-30,SAE15W-40			
Lube oil capacity	0.75	1.1	1.65	1.65
Starting system	X: Recoil starter E:12V Electric system			
Fuel Type	0#(summer),-10#(winter),-20#(chilliness) diesel			
Fuel Tank Capacity	13.5	13.5	13.5	13.5
Packing Size(L×W×H)[mm]	640*480*530	655*480*530	720*492*655	720*492*655
Gross weight [kg]	X: 53 E: 60	X: 65 E: 70	E: 100	E: 100



MODEL NO	JM7000X(E)	JM8000X(E)	JM10000X(E)	JM10000E3
Rated frequency[Hz]	50/60	50/60	50/60	50/60
Rated voltage [V]	115/230 ;120/240	115/230 ;120/240	115/230 ;120/240	230/400 ;127/220
Rated power [kVA]	6.0/6.5	6.5/6.8	7.5/7.8	7.5/7.8
Max power[kVA]	6.5/7.0	7.0/7.5	8.0/8.3	8.0/8.3
Rated current [A]	52.1/26.1 ; 54.2/27.1	56.5/28.2 ; 54.1/27	65.2/32.6 ; 62.5/31.25	10.8 ; 19.6
Rated rotation speed [RPM]	3000/3600	3000/3600	3000/3600	3000/3600
Pole No.	2	2	2	2
Phase number	1	1	1	3
Excitation mode	Self-excitation and constant voltage(with AVR)			
Power factor [COSΦ]	1	1	1	0.8
Insulation grade	F	F	F	F
Engine model No	JM192FA(E)	JM195F(E)	JM1100FE	JM1100FE
Engine type	Single cylinder, in-lined, 4-stroke, air cooled, direct-injected			
Bore×stroke	92x75	95x75	100x85	100x85
Displacement	499	532	668	668
Lubrication system	Pressure splashed			
Lube oil brand	CD Grade Above or SAE 10W-30,SAE15W-40			
Lube oil capacity	1.65	1.65	2.1	2.1
Starting system	X: Recoil starter E:12V Electric system			
Fuel Type	0#(summer),-10#(winter),-20#(chilliness) diesel			
Fuel Tank Capacity	13.5	13.5	13.5	13.5
Packing Size(L×W×H)[mm]	720*492*655	720*492*655	720*492*655	720*492*655
Gross weight [kg]	E: 105	E:108	E: 120	E: 120





MODEL NO	JM12000E	JM15000E	JM18000E
Rated frequency[Hz]	50/60	50/60	50/60
Rated voltage [V]	115/230 ;120/240	115/230 ;120/240	115/230 ;120/240
Rated power [kVA]	10	12	15
Max power[kVA]	11	13	16
Rated current [A]	86.9/43 ; 83.3/41.6	104.3/52.1 ; 100/50	130.4/65.2 ; 125/62.5
Rated rotation speed [RPM]	3000/3600		
Pole No.	2	2	2
Phase number	1	1	1
Excitation mode	Self-excitation and constant voltage(with AVR)		
Power factor [COSΦ]	1	1	1
Insulation grade	F	F	F
Engine model No	JM2V88F	JM2V92F	JM2V95F
Engine type	V-twin,4-Stroke,Air-cooled ,Direct injection,Diesel engine		
Bore×stroke	88x75	92x75	95x88
Displacement	912	997	1247
Lubrication system	Pressure Splashed		
Lube oil brand	CD Grade Above or SAE 10W-30,SAE15W-40		
Lube oil capacity	2.8	3.5	3.5
Starting system	12V Electric Start		
Fuel Type	0#(summer), -10#(winter),-35# (chillness)Diesel		
Fuel Tank Capacity	25	25	25
Packing Size(L×W×H)[mm]	1060*680*800	1060*680*800	1060*680*800
Gross weight [kg]	197	207	235



MODEL NO	JM6500T	JM6700T	JM7700T	JM8700T
Rated frequency[Hz]	50/60	50/60	50/60	50/60
Rated voltage [V]	115/230 ;120/240	115/230 ;120/240	115/230 ;120/240	115/230 ;120/240
Rated power [kVA]	4.5/5.0	4.5/5.0	5.0/5.5	6.0/6.5
Max power[kVA]	5.0/5.5	5.0/5.5	5.5/6.0	6.5/7.0
Rated current [A]	39.1/19.6 ; 41.7/20.8	39.1/19.6 ; 41.7/20.8	43.5/21.7 ; 45.8/22.9	52.1/26.1 ; 54.2/27.1
Rated rotation speed [RPM]	3000/3600			
Pole No.	2	2	2	2
Phase number	1	1	1	1
Excitation mode	Self-excitation and constant voltage(with AVR)			
Power factor [COSΦ]	1	1	1	1
Insulation grade	F	F	F	F
Engine model No	JM186FAE	JM186FAE	JM188FAE	JM192FAE
Engine type	Single cylinder, in-lined, 4-stroke, air cooled, direct-injected			
Bore×stroke	86x72	86x72	88x75	92x75
Displacement	418	418	456	499
Lubrication system	Pressure splashed			
Lube oil brand	CD Grade Above or SAE 10W-30,SAE15W-40			
Lube oil capacity	1.65	1.65	1.65	1.65
Starting system	12V Electric system			
Fuel Type	0#(summer),-10#(winter),-20#(chillness) diesel			
Fuel Tank Capacity	15	15	15	15
Packing Size(L×W×H)[mm]	940×560×760	940×560×760	940×560×760	940 x 560 x 760
Gross weight [kg]	150	150	150	150

DIESEL GENERATOR
10+YEAR OEM&ODM
PROFESSIONAL EXPERIENCE



P11

DIESEL GENERATOR
10+YEAR OEM&ODM
PROFESSIONAL EXPERIENCE



P12



MODEL NO	JM7000TD	JM8000TD	JM9000TD	JM10000TD	JM11000TD
Rated frequency[Hz]	50/60	50/60	50/60	50/60	50/60
Rated voltage [V]	115/230 ;120/240	115/230 ;120/240	115/230 ;120/240	115/230 ;120/240	115/230 ;120/240
Rated power [kVA]	4.5/5.0	5.0/5.5	6.0/6.5	6.5/6.8	7.5/7.8
Max power[kVA]	5.0/5.5	5.5/6.0	6.5/7.0	7.0/7.5	8.0/8.3
Rated current [A]	39.1/19.6 ; 41.7/20.8	43.5/21.7 ; 45.8/22.9	52.1/26 ; 50/25	56.5/28.2 ; 54.1/27	65.2/32.6 ; 62.5/31.25
Rated rotation speed [RPM]	3000/3600	3000/3600	3000/3600	3000/3600	3000/3600
Pole No.	2	2	2	2	2
Phase number	1	1	1	1	1
Excitation mode	Self-excitation and constant voltage(with AVR)				
Power factor [COSΦ]	1	1	1	1	1
Insulation grade	F	F	F	F	F
Engine model No	JM186FAE	JM188FAE	JM192FAE	JM195FE	JM1100FE
Engine type	Single cylinder, in-lined, 4-stroke, air cooled, direct-injected				
Bore×stroke	86x72	86x75	92x75	95x75	100x85
Displacement	418	456	499	532	668
Lubrication system	Pressure splashed				
Lube oil brand	CD Grade Above or SAE 10W-30,SAE15W-40				
Lube oil capacity	1.65	1.65	1.65	1.65	1.65
Starting system	12V Electric system				
Fuel Type	0#(summer),-10#(winter),-20#(chilliness) diesel				
Fuel Tank Capacity	15	15	15	15	15
Packing Size(L×W×H)[mm]	940×560×760	940×560×760	940×560×760	870 x 645 x 710	870 x 645 x 710
Gross weight [kg]	160	160	160	175	175



MODEL NO	JM12000TD	JM15000TD	JM18000TD
Rated frequency[Hz]	50/60	50/60	50/60
Rated voltage [V]	115/230 ;120/240	115/230 ;120/240	115/230 ;120/240
Rated power [kVA]	10	12	15
Max power[kVA]	11	13	16
Rated current [A]	86.9/43 ; 83.3/41.6	104.3/52.1 ; 100/50	130.4/65.2 ; 125/62.5
Rated rotation speed [RPM]	3000/3600		
Pole No.	2	2	2
Phase number	1	1	1
Excitation mode	Self-excitation and constant voltage(with AVR)		
Power factor [COSΦ]	1	1	1
Insulation grade	F	F	F
Engine model No	JM2V88F	JM2V92F	JM2V95F
Engine type	V-twin,4-Stroke,Air-cooled ,Direct injection,Diesel engine		
Bore×stroke	88x75	92x75	95x88
Displacement	912	997	1247
Lubrication system	Pressure Splashed		
Lube oil brand	CD Grade Above or SAE 10W-30,SAE15W-40		
Lube oil capacity	2.8	3.5	3.5
Starting system	12V Electric Start		
Fuel Type	0#(summer), -10#(winter),-35# (chillness)Diesel		
Fuel Tank Capacity	25	25	25
Packing Size(L×W×H)[mm]	1220*670*875	1220*670*875	1320*750*870
Gross weight [kg]	256	267	297

DIESEL GENERATOR
10+YEAR OEM&ODM
 PROFESSIONAL EXPERIENCE



P13

DIESEL GENERATOR
10+YEAR OEM&ODM
 PROFESSIONAL EXPERIENCE



P14



MODEL NO	JM6500EW	JM180EW	JM7500EW
Rated frequency[Hz]	50/60	50/60	50/60
Rated voltage [V]	115/230 ;120/240	115/230 ;120/240	115/230 ;120/240
Rated power[kVA]	4.5	2	4.5
Rated current[A]	39.1/19.6 ; 41.7/20.8	14.8/7.4 ; 16.7/8.3	39.1/19.6 ; 41.7/20.8
Rated rotation speed [RPM]	3000/3600		
Pole No.	2	4	2
Phase number	1	1	1
Power factor [COSΦ]	1	1	1
Rated welding voltage	65-70	65-70	65-70
Rated welding current	160	160	180
Welding voltage	25-30		
Welding load continuous ratio	60%	60%	60%
Welding current adjusting range	50~180	50~180	50~200
Engine model No	JM186FAE	JM186FAE	JM188FAE
Engine Type	Single cylinder, in-lined, 4-stroke, air cooled, direct-injected		
Lubrication system	Pressure Splashed		
Lube oil brand	CD Grade Above or SAE 10W-30,SAE15W-40		
Lube oil capacity	1.65	1.65	1.65
Starting system	Recoil starter or 12v electric starter		
Fuel type	0#(summer), -10#(winter),-35# (chillness)Diesel		
Fuel tank capacity	13.5	13.5	13.5
Packing Size(L×W×H)[mm]	720*492*655	720*492*655	720*492*655
Gross weight [kg]	110	110	110



MODEL NO	JM200EW	JM8500EW	JM220EW
Rated frequency[Hz]	50/60	50/60	50/60
Rated voltage [V]	115/230 ;120/240	115/230 ;120/240	115/230 ;120/240
Rated power[kVA]	2	4.5	2
Rated current[A]	14.8/7.4 ; 16.7/8.3	39.1/19.6 ; 41.7/20.8	39.1/19.6 ; 41.7/20.8
Rated rotation speed [RPM]	3000/3600		
Pole No.	4	2	4
Phase number	1	1	1
Power factor [COSΦ]	1	1	1
Rated welding voltage	65-70	65-70	65-70
Rated welding current	180	200	200
Welding voltage	25-30		
Welding load continuous ratio	60%	60%	60%
Welding current adjusting range	50~200	50~220	50~220
Engine model No	JM188FAE	JM192FAE	JM192FAE
Engine Type	Single cylinder, in-lined, 4-stroke, air cooled, direct-injected		
Lubrication system	Pressure Splashed		
Lube oil brand	CD Grade Above or SAE 10W-30,SAE15W-40		
Lube oil capacity	1.65	1.65	1.65
Starting system	Recoil starter or 12v electric starter		
Fuel type	0#(summer), -10#(winter),-35# (chillness)Diesel		
Fuel tank capacity	13.5	13.5	13.5
Packing Size(L×W×H)[mm]	720*492*655	720*492*655	720*492*655
Gross weight [kg]	110	115	115

DIESEL GENERATOR
10+YEAR OEM&ODM
PROFESSIONAL EXPERIENCE



P15

DIESEL GENERATOR
10+YEAR OEM&ODM
PROFESSIONAL EXPERIENCE



P16